

CERTIFICATE OF LOCATION OF GOVERNMENT CORNER

EAST QUARTER Corner of Section 24, Township 107 N, Range 40 W, 5th P.M.

STATE OF MINNESOTA, County of MURRAY

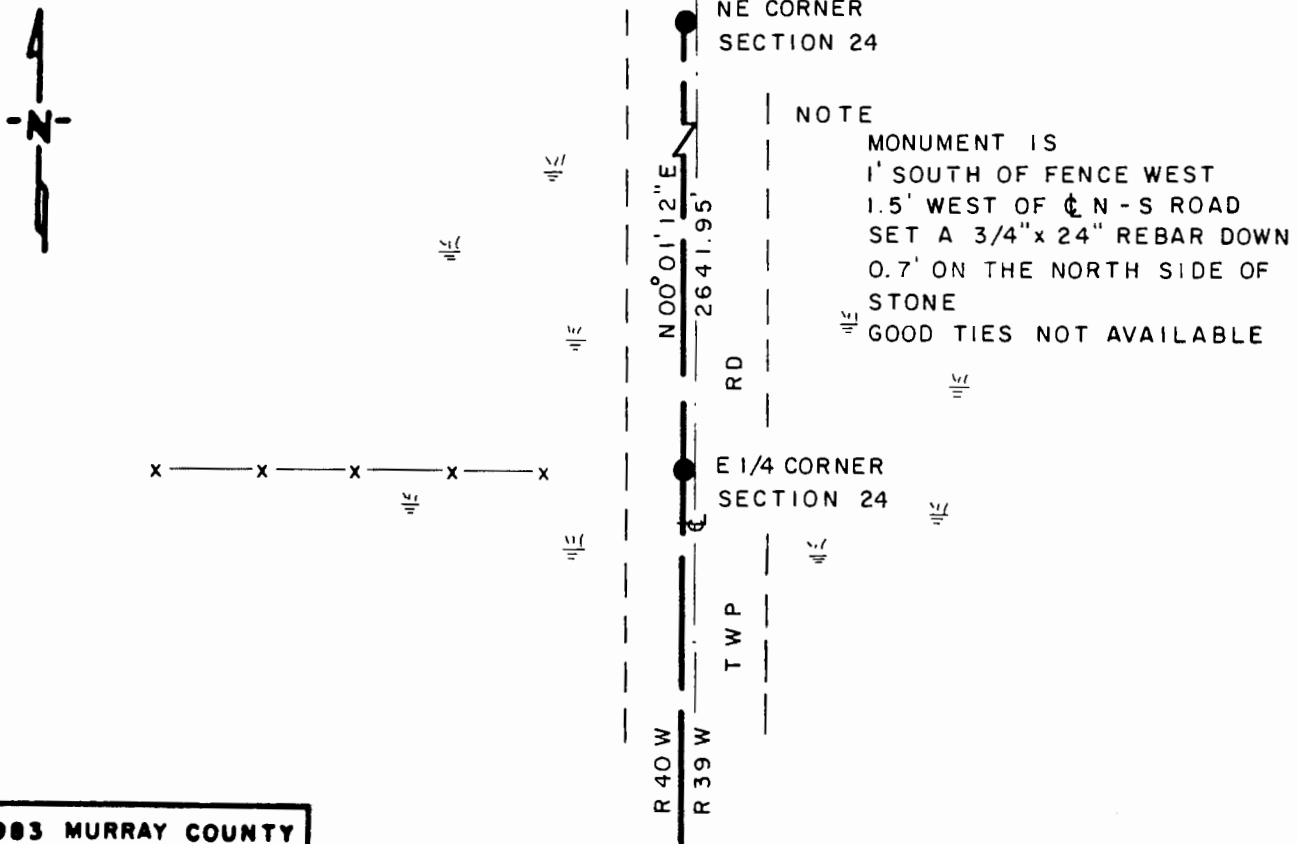
At the corner location shown on the sketch

On 5-8-91 found a 15" x 12" x 20" STONE, DOWN 0.10'
DATE

left monument as found, lowered monument, removed monument (explain)

On 5-8-91 placed a 3/4" x 24" REBAR, DOWN 2.5', UNDER STONE,
DATE WHICH WAS RESET DOWN 0.5'

SKETCH OF REFERENCE TIES



**1983 MURRAY COUNTY
 COORDINATE SYSTEM**
 N = 176,655.625
 E = 548,381.297

BEARING IS IN COUNTY ORIENTATION

Statement of evidence relative to this corner location is on back of page

J.B.M. 6-27-91
 WAS - 01348

I hereby certify that this document and the data contained herein was prepared by me or under my direct supervision.

Bruce W. Shipp 8-12-91
SIGNATURE DATE

Registration No. 17003

- Land Surveyor, Professional Engineer
- County Surveyor, County Engineer

OFFICE OF THE COUNTY RECORDER
 County of MURRAY

I hereby certify that this document was filed in the Co. Recorders office at _____ M. on the AUG 15 1991 day of _____ A.D., 19__

County Recorder James V. Johnson
 By _____, Deputy

DOCUMENT NO. _____

The DNR Bureau of Engineering contacted the following for survey information:

Secretary of State's Office
Murray County Recorder's Office and Highway Engineer's Office
Chicago and North Western Railway Office in St. Paul
Minnesota Department of Transportation Office in St. Paul

- 1861 U.S. General Land Office notes obtained from the Secretary of State's Office show the location of the corner in a swamp. A witness corner was set 25.00 chains (1650.00') north and marked with a wood post and a charred stake in a mound of earth and sod with trench and pits as per instructions.
- 1898 Surveyor's Record Book A, page 77, obtained from the County Recorder's Office contains a survey by J. W. Woolstencraft. Survey shows an 8" by 8" by 24" stone at corner but does not indicate if found or set. The corner is shown:
40.15 chains (2649.90') from the northeast corner of Section 24
40.15 chains (2649.90') from the northeast corner of Section 25
- No Date A right-of-way map obtained from the Chicago and North Western Railway Office shows an angle and distance from center line stationing to corner. A description of what was found or set at corner is not given. The corner is shown:
on the center line of a north-south road
1417.5 feet from the center line of railroad
2635.0 feet from the northeast corner of Section 25
- 1964 The DNR Bureau of Engineering set a railroad spike for corner on line between section corners. The following ties are shown to corner:
on the center line of a north-south road
in line with fence west
60d spike on northeast side of power pole, northwest, 34.3 feet
60d spike on southeast side of corner fence post, west, 44.2 feet
2632.19 feet from the northeast corner of Section 25
2640.50 feet from the northeast corner of Section 24
- 1974 The DNR Bureau of Engineering set a 3/8 inch by 24 inch iron rod for corner per 1964 survey. The following ties are shown to corner:
on center line of a north-south road
in line with fence west
notch on west end of CMC, northwest, 85.00 feet
notch on east end of CMC, northeast, 84.95 feet
2632.71 feet from the northeast corner of Section 25
2640.19 feet from the northeast corner of Section 24
- 1991 May, The DNR Bureau of Engineering hired a backhoe to dig for evidence of the witness corner. Dug a 14' north-south by 5' east-west by 4' deep hole the center being 990 feet south of the northeast corner of Section 24. No evidence of a monument was found.

Also, dug with a backhoe in the area of the east quarter corner of Section 24 and found a bent 3/8" by 24" iron rod laying on its side at the surface. Further excavation revealed a 15" by 12" by 20" irregular shaped stone down 0.1 of a foot. A 20' north-south by 5' east-west by 1.5' deep hole was dug, centered on the found stone. No other monumentation was found in excavation. Searched for but found no evidence of the record ties.

Discarded the bent iron rod and set a 3/4" by 24" rebar down 2.5' under the stone which was reset down 0.5 of a foot. Also, set a 3/4" by 24" rebar down 0.7 of a foot on the north side of the stone. The stone was found to be:

- 1 foot south of a fence west
- 1.5 feet west of the center line of a north-south road
- 2641.95 feet from the northeast corner of Section 24
- 2633.87 feet from a bridge bolt found in the area of the northeast corner of Section 25

Analysis of the above information led the DNR Bureau of Engineering to conclude that the found stone marks the location of the corner. Did not establish a position for the witness corner.